



# WINTON

## Community Response Plan



Southland has **NO** Civil Defence sirens  
(fire brigade sirens are not used as warnings for  
a Civil Defence emergency)

Please take note of natural warning signs as your first and best warning for any  
emergency



Winton Community Response Plan 2018 (public web version)  
Find more information on how you can be prepared for an emergency

[www.cdsouthland.nz](http://www.cdsouthland.nz)

If you'd like to become part of the Winton Community Response Group  
please email [community@cdsouthland.nz](mailto:community@cdsouthland.nz)

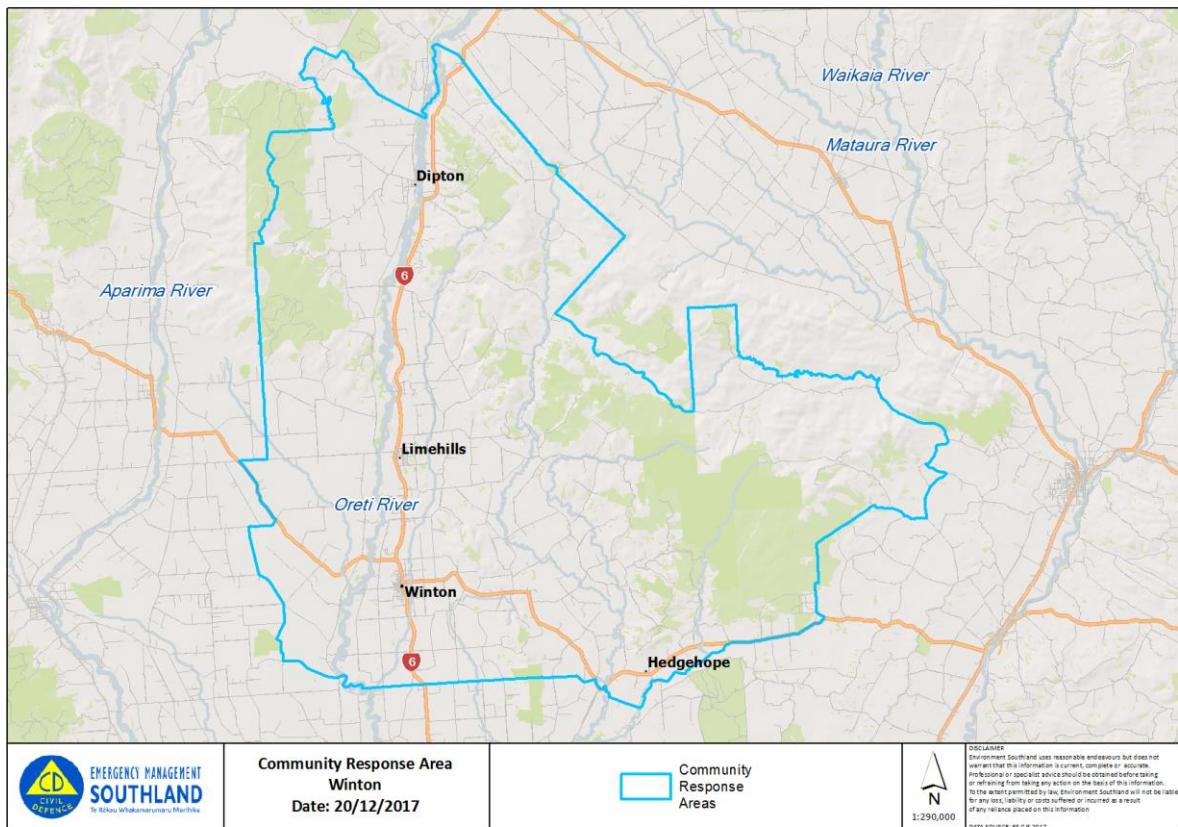
## **In the event of an emergency, communities may need to support themselves for up to 10 days before assistance arrive.**

### **Community Response Planning**

In the event of an emergency, communities may need to support themselves for up to 10 days before assistance arrives. The more prepared a community is, the more likely it is that the community will be able to look after themselves and others. This plan contains a short demographic description of Winton, information about key hazards and risks, information about Community Emergency Hubs where the community can gather, and important contact information to help the community respond effectively. Members of the Winton Community Response Group have developed the information contained in this plan and will be Emergency Management Southland's first points of community contact in an emergency.

### **Demographic details**

- Winton is contained within the Southland District Council area;
- Winton has a population of approximately 2,200 and the town services a total population of about 6000;
- the town is a commercial centre servicing a large farming community and sawmilling is the towns biggest industry;
- the town has a medical centre, maternity hospital, ambulance, police and fire service, aged care facility, two primary schools - as well as two in the wider district, a secondary school and various preschool options;
- the broad geographic area for the Winton Community Response Plan includes Lochiel, Centre Bush, Drummond and Browns, see map below for a more detailed indication.
- this is not to limit the area but to give an indication of the extent of the geographic district. Flexibility needs to be maintained considering that a specific disaster may render existing geographical boundaries irrelevant.



## Hazard and Risk information

Potential hazards and risks for the Winton area include:

### Earthquake

- Like much of the South Island, Winton would be affected during an Alpine Fault earthquake. The most likely impacts for Winton would be loss of lifelines causing loss of communication, water supply, power and road disruption.

### Flooding

- Winton has been affected historically by flooding including the 1984 floods. Key areas of risk for Winton is the subdivision at the Northern end of the town and the area near the Southern end of town by Dejoux Road.

### Agricultural and biosecurity

- With 1.5 million hectares of farmland in Central Southland, any impacts to livestock or for land use could have major economic and health impacts, especially around psychosocial impacts.

### Road Infrastructure damage

- As a commercial hub for a large population, anything which may impact the delivery of goods to service the area needs to be considered.

## Identified potential vulnerable sub communities

- Schools: Winton Primary (approximate roll 300-350 ), St Thomas's (approximate roll 70 – 80), Central Southland College (550-600) and rural schools Lochiel and Lime Hills;
- Winton kindergarten – 30 in the morning session and 20 in the afternoon session;
- Weka preschool – licensed for 74 children;
- Rest home: Rata Park (20 beds);
- Elderly in the community;
- Rurally isolated people including migrant employees;
- People with disabilities;
- People with high risk medical conditions – the medical centre and pharmacists can source this information if needed.

## Community Emergency Hubs

Community Emergency Hubs provide pre-identified places where the community can gather in the event of an emergency. Not all Hubs will be suitable during an emergency, and it is up to the community to decide at the time. It is possible that a new venue will need to be found, but the concept of a location where the community gather is vital during a response as people seek immediate support, shelter, comfort and information.

Each pre-determined location will be provided with a hub guide and be able to access advice from Emergency Management Southland if they require further information or support. In Winton, Community Emergency Hub locations identified by the community are:

- Presbyterian church - 11 Meldrum Street, Winton
- Salvation Army – 7 Dejoux Road, Winton

## Southland District Council numbers

Organisation	Phone	Other details
Water Treatment Plant (SDC)	0800 732 732	Water and Waste Services staff at SDC
Winton Library	0800 732 542	library@southlanddc.govt.nz
SDC Office	0800 732 732	sdcsouthlanddc.govt.nz
SDC Community Partner	021 201 9802	Michelle Stevenson

## Schools, Rest home, Medical and Community Organisations

Winton Primary	Steve Wadsworth	03 236 7238	<a href="mailto:principal@winton.school.nz">principal@winton.school.nz</a>
St Thomas's	Teresa Jarvis	03 236 8261	<a href="mailto:office@stthomaswinton.school.nz">office@stthomaswinton.school.nz</a>
Central Southland College	Peter Turnbull	03 236 7646	<a href="mailto:office@csc.school.nz">office@csc.school.nz</a>
Lochiel School	Geoff Folster	03 221 7079	<a href="mailto:principal@lochiel.school.nz">principal@lochiel.school.nz</a>
Lime Hills School		03 236 0772	<a href="mailto:principal@limehills.school.nz">principal@limehills.school.nz</a>
Winton Comm Support	Louise Faithful	03 236 9934	wcsw@xtra.co.nz
Winton Business Assoc	Maria Scammell		maria@brentscammellhonda.co.nz
Winton Medical Centre		03 236 7444	wmp@xtra.co.nz
Winton Pharmacy	Geoff & Michelle Carleton	03 236 7729	
Winton Community Board	Geoff Jukes	027 434 0599	<a href="mailto:geoff@jukescontracting.co.nz">geoff@jukescontracting.co.nz</a>

## Community Response Group Contact lists (some numbers have been removed for public release)

### Key local emergency service contacts

Police	Peter Graham	(03) 236 6060	
Fire	Steve Milne	(03) 236 1014	027 228 7112
Fire	Steven McDowall		
St John	Juon Schoen		
St John	Antoine Hamilton		

### Community Emergency Hub key holders

Salvation Army	Adam Grove	021 805 604	03 236 0928
Presbyterian Church	John Willis	03 236 8822	

Should the above locations be unusable the community has identified the potential use of RSA Hall, Bridge club, Squash club and Senior Citizens Centre.

### Community Response Group Members (numbers have been removed for public release)

Doug Harrington			
Ken Galt			
Flora Catto			
Vanessa Iddles			
Neil Paterson			
Lyll Bailey			
Mark Taylor			
Janet Horrell			
Geoff Jukes			
Mike Bailey			
Steve Milne			
Steven McDowall			
Peter Graham			
Barbara Stirling (Limehills)			
Helen McLeish (Drummond)			

### Community Response Groups into Recovery

Community Response Groups will be vital during the recovery of a community. They will be able act as a connection between the community and the recovery team. They will have key local knowledge and understand the effects of decisions on the local community. They will be able to identify areas of the most importance to the community and suggest ways to work towards the communities' end goals. The process around community recovery will be described in greater depth in the Southland Recovery Plan.

## Drummond

Also included in the Winton Plan is the community of Drummond.

Drummond is located 35 kilometers north of Invercargill and 19 kilometers west of Winton.

With an approximate population of 250, Drummond residents identify themselves being closely associated with, yet a separate community to Winton.

The area has a local school, Drummond Primary with a roll of around 60 and the local secondary school is Central Southland College located in Winton. Drummond school contact is Natasha Spittle (Principal) [office@drummondschool.nz](mailto:office@drummondschool.nz).

The area has an increasingly diverse population, with a number of international workers employed on farms. There are fears that as these workers do not have an historical connection to the local community they may become isolated an emergency. The local community have noted they will check on new residents to ensure their safety.

A major concern of residents is being cut off by the Oreti River during a flood event, with those on the Winton side becoming separated from their community and family. This applies to students, residents who work in Winton and those who may be out of the area for other reasons.

Many local resources have been identified, including the golf club, rugby club and Oreti Community Hall. Residents also noted that many locals have boats which could be used if conditions allow. Those living in or near Drummond are also well prepared for a possibility of being cut off with the ability to maintain independent water supply, food and alternative power sources.

Contact for the Drummond community is listed in Community Response Group above.



## Winton



Map Scale 1:2,000 @ A0  
Map Date 10 April 2016  
Imagery Date 18 November 2017

Copies of this property map will be available on the Emergency Management Southland Website and hard copies available with each Community Emergency Hub Guide and at the library in Winton.