



University of Otago College of Education –  
Southland Campus

# Community Emergency Hub Plan







## **Southland has NO Civil Defence sirens**

(Fire brigade sirens are not used to warn of  
a Civil Defence emergency)





## Emergency Management Southland

Emergency Management Southland (EMS) is a shared service of the four councils in Southland and is responsible for the delivery of Civil Defence Emergency Management in the region. An important part of this planning focuses on how EMS can enable communities to support themselves and others during adverse events. This includes encouraging communities to support each other in a safe place of shelter – Community Emergency Hubs. These Community Emergency Hubs offer communities a place where they can come together and make collective decisions on how to best look after themselves. EMS recognises the value and importance of a community led response and will support and offer advice on the development of Community Emergency Hubs in Southland.

## Community Response Planning

In a significant emergency, communities may be adversely affected and official emergency services could be stretched to the point where they need to prioritise areas and situations of most need. It may be up to 10 days before official assistance arrives to support communities, so it is vital that communities have the ability to self organise during such an event.

Communities are filled with people who have different skills and can work together to solve local problems. By coming together in Community Emergency Hubs, people can make collective decisions to ensure the safety and comfort of everyone in their community.

Community Emergency Hubs also play a vital role in providing official agencies with information about how a community has been impacted by an emergency. Planning around a Community Emergency Hub will ensure systems are in place to feed this information and knowledge back to the Emergency Coordination Centre, where trained staff will be coordinating the response to the emergency.

Due to damage caused by the impacts of an emergency which may affect buildings or disrupt lifelines such as roading, power and communication it may not be practical to open a Community Emergency Hub. It is up to the staff at the University of Otago College of Education – Southland Campus to make this decision at the time. It is possible that a new venue may need to be found.

## University of Otago, College of Education – Southland Campus Community Emergency Hub

Situated in the residential suburb of Georgetown, The University of Otago College of Education – Southland Campus, is ideally situated to support students, facility and the surrounding community during an emergency.

The management team have agreed to work with EMS to develop planning for The College of Education (Invercargill) Community Emergency Hub.

The staff at the college will be provided with guidance on how to open and run a Community Emergency Hub and those involved will be able to access advice from Emergency Management Southland if they require further information or support. If the impacts of the emergency exceeds the capability of the community to cope, then following discussions with Emergency Management Southland a Civil Defence Centre may be set up at this location. This Civil Defence Centre will allow access to national agencies to assist people who may require additional support. It will also increase the availability of resources to the community. It will be managed by staff deployed to the centre by EMS, who will work alongside the management team at The University of Otago College of Education – Southland Campus.



The

University of Otago College of Education – Southland Campus



## Hazard and Risk information

Understanding the potential risks and hazards which could impact a community is the first step in undertaking planning for that area.

Potential hazards and risks for Invercargill include:

### Earthquake

- Like much of the South Island, Invercargill and surrounding areas would be affected by an Alpine Fault earthquake. The most likely impacts would be loss of lifelines causing isolation due to damaged buildings and roads, as well as potential loss of communications, water supply, sewage and power.

### Weather

- Situated close to the Southern Ocean, Invercargill can experience extreme wind events. Future projections for climate change indicate that the occurrence of extreme wind events may alter, with the strength of extreme winds expected to increase over the South Island potentially causing damage to infrastructure.
- Storm damage can impact on infrastructure and roading, limiting access to townships. If the storm is severe enough, power can be lost to communities for days or longer for more remote areas.
- Southland is expected to become wetter, particularly in winter and spring. Seasonal projections show winter rainfall increasing by 7 to 22 percent in Invercargill by 2090.

### Power Outage

- A short-term power outage can disrupt people's lives. We are increasingly reliant on power for everyday needs for home and business. A long-term power disruption can be extremely challenging for communities.

### Flooding

- Invercargill has experienced flooding in the past. Investment in flood protection, including the development of flood banks has provided Invercargill with increased protection, however an extreme event could put low lying areas of Invercargill at risk.
- King tides combined with heavy rain fall and strong winds can affect areas close to the coast and New River Estuary.
- Flooding affecting areas outside Invercargill City could affect the supply of goods by road which may impact on the supply of goods for local community.

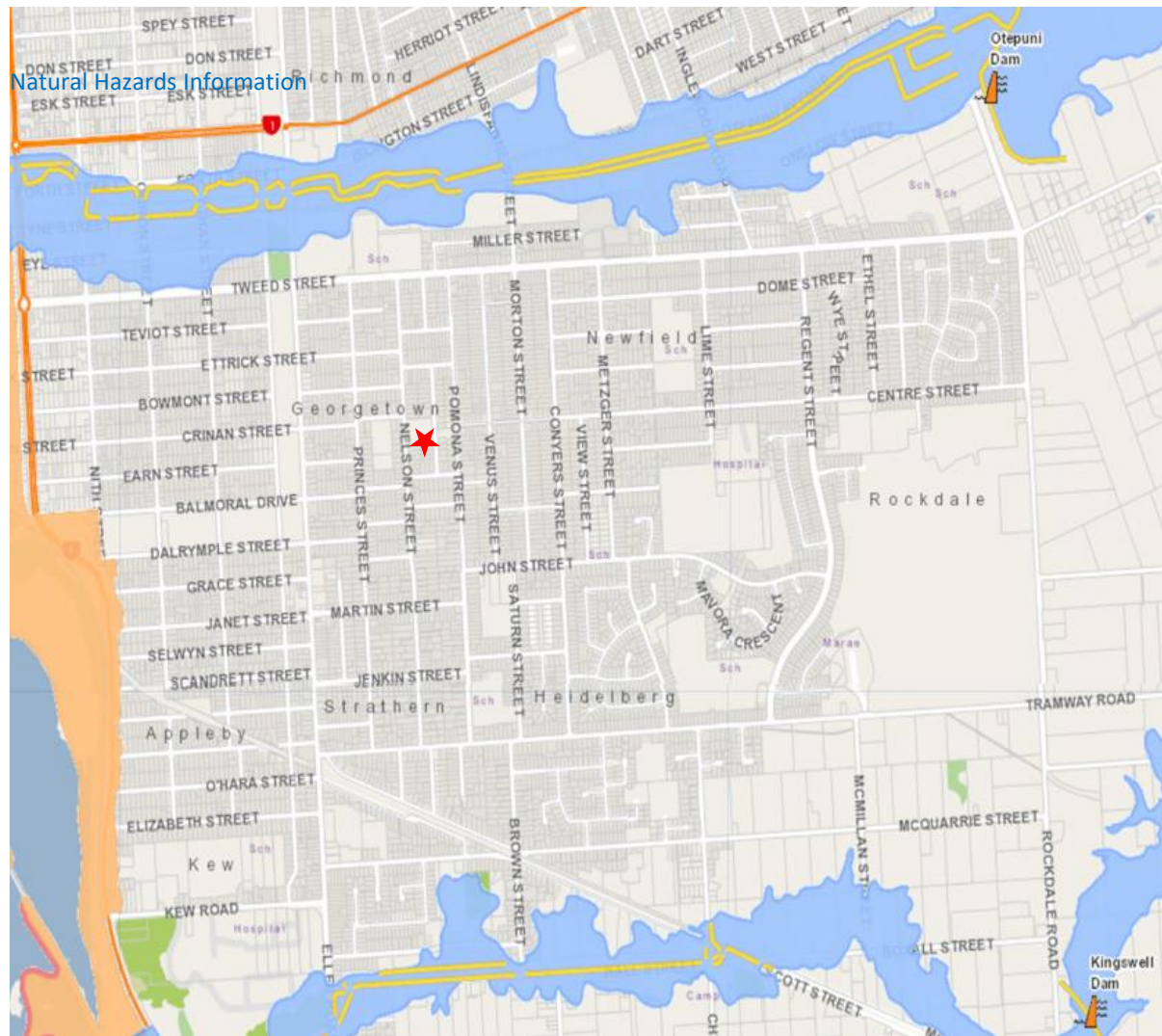


## Tsunami

Most Tsunami are generated by large magnitude, shallow earthquakes under the sea floor, they can also be caused by land or submarine landslides and offshore volcanoes.

- Local tsunami can be generated by an earthquake on the Puysegur Trench southwest of the South Island which may affect Invercargill. It is likely a tsunami from this area could hit the coast within an hour and half. This has the potential to inundate the Invercargill Estuary and low-lying areas of Invercargill.
- Regional Tsunami have a travel time of one to three hours to New Zealand from areas along the Hikurangi or Kermadec Trenches.
- Distant source tsunami would have a travel time of greater than 3 hours. This includes more remote sources such as Peru or Chile which could take 12 - 14 hours to reach Invercargill.





Legend:

★ College of Education location



Potential floodplain



River stopbanks



Tsunami evacuation zones



## Community Emergency Hub location

The University of Otago College of Education - Southland Campus  
Community Emergency Hub location is:

- 100 Nelson St, Invercargill

If the hub is opening, it might pay to think about bringing some basics, such as:

- Water
- Tea and coffee
- Milk and biscuits
- Toilet paper
- First aid kits
- Torches
- Battery Powered Radio

It is also a good idea to ask people to bring things with them if they can. These basics will make the initial stages of an emergency more comfortable.

## Groups into Recovery

Community Response Groups will be vital during the recovery of a community. They will be able to act as a connection between the community and the recovery team. They will have key local knowledge and understand the effects of decisions on the local community. They will be able to identify areas of the most importance to the community and suggest ways to work towards the communities' end goals. The process around community recovery will be described in greater depth in the Southland Recovery Plan. Being involved in Recovery is vital for education providers as the recovery process may impact on their students, staff and long-term business planning.



## Southland College of Education Contact list

| Name  | Phone             | Email                        |
|---|-------------------|------------------------------|
| Meredith Kelly                                      | 027 249 9586      | meredith.kelly@otago.ac.nz   |
| Jolene Dunn   | 027 542 6807      | jolene.dunn@otago.ac.nz      |
| Parker Ormond                                       | 027 850 5791      | parker.ormond@otago.ac.nz    |
| Allison McKenzie                                    | 021 275 2546      | alli.mckenzie@otago.ac.nz    |
| Julie Mynes   | 027 521 7182      | julie.mynes@otago.ac.nz      |
| Cheryl Robertson                                    | 027 310 9560      | cheryl.robertson@otago.ac.nz |
| Mary O'Rourke                                       | 027 609 4877      | mary.orourke@otago.ac.nz     |
| Dorothy Stirling                                    | 03 217 7879       | dorothy.stirling@otago.ac.nz |
| Alice Hildebrand                                    |                   | alice.hildebrand@otago.ac.nz |
| Marni Stone   | 021 994 743       | marni.stone@otago.ac.nz      |
| Pam Melgren   | 03 217 3318       | pam.melgren@otago.ac.nz      |
| Averil Lee  | 021 190 4065      | averil.lee@otago.ac.nz       |
| Cheryl Pym  | 021 190 1317      | cheryl.pym@otago.ac.nz       |
| Raiha Johnson                                       | 021 142 7532      | raiha.johnson@otago.ac.nz    |
| Vicki Collett                                       | 027 631 6661      | vicki.collett@otago.ac.nz    |
| Grant Godby   | 021 477 137       | grant.godby@otago.ac.nz      |
| Southland College of Education -<br>Satellite Phone | 0088 1622 449 980 |                              |

Please contact in order.

## Emergency Management Southland Contact List

| Name   | Phone                     | Email                  |
|--|---------------------------|------------------------|
| Duty Advisor   | 03 211 5411<br>0800768845 | ems@cdsouthland.nz     |
| Southland Emergency Coordination<br>Centre                 |                           | welfare@cdsouthland.nz |
| Southland Emergency Coordination<br>Centre Satellite Phone | 0088 1631 450 992         |                        |

